

WOKINGHAM BOROUGH COUNCIL CLIMATE EMERGENCY ACTION PLAN IN A SNAPSHOT



SEPTEMBER 2024



CONTENTS

Message from Cllr Jordan Montgomery	3
Our Climate Emergency Response.....	4
Our Dream for a Carbon Neutral Borough	5
Our climate emergency action plan progress.....	6
Current & Future Emissions.....	8
Priority 1 – Transport	9
Priority 2 – Renewable Energy Generation	10
Priority 3 – Building Retrofitting.....	11
Priority 4 – Carbon Sequestration	12
Priority 5 – Waste & Recycling.....	13
Priority 6 – New Developments.....	14
Priority 7 – Procurement.....	15
Priority 8 – Engagement & Behaviour Change.....	16
Priority 9 – Council Specific Actions.....	17



MESSAGE FROM COUNCILLOR JORDAN MONTGOMERY, MEMBER FOR ENVIRONMENT & CLIMATE EMERGENCY



Climate change is happening: the scientific evidence is compelling and undeniable. There has always been climate change, however the climate change we are now experiencing is different, because this time it's being caused by us. The emissions from fossil fuels since the start of the industrial revolution has greatly increased the amount of carbon dioxide and similar gases in our atmosphere, creating a warming, greenhouse effect around the planet. This is increasing global and UK average temperatures, making the world's weather

more extreme. We are in a climate emergency.

We have already begun to experience these extreme weather events in Wokingham Borough. From the increase in flooding and storms, the higher number of heatwaves and more unpredictable weather events. It is a threat to our economy, environment, health, way of life and to our community.

Climate impacts and extreme weather events can affect anyone, but some people are more affected than others particularly the poorest and most vulnerable groups in our society. The climate emergency is intertwined with the cost of living and fuel poverty crisis. Failing to act on climate change will result in higher energy prices, impact the cost of living further and affect our health and well-being.

The good news is that it doesn't have to be like this. We can mitigate the impacts of climate change if we act now and act together. Even though all of us are a small part of the change that is needed, if we take action and consciously try to live a lower-carbon lifestyle, we can create a new normal. By finding ways to live with less impact we show those around us what is possible.

We are free to make choices: how we travel, what food we eat, how we use the land around us and how we heat and power our homes. This isn't about a few people being perfect but a lot of people making small changes, collectively driving change and making an impact. Everyone has the power to influence the important areas of their lives, everyone is on a different journey, but we can and do all make a difference and have a responsibility to do so for future generations.

To tackle climate emergency, we need to decarbonise our economy and infrastructure, and this is where the Climate Emergency Action Plan comes in. It is our collective plan as a Borough which lays out the actions, we have committed to deliver to working towards becoming a carbon neutral Wokingham Borough by 2030.

We recognise that we cannot achieve our carbon neutrality goal by working in isolation. We need more resources and support from Central Government to deliver the bold decarbonisation actions set out in this plan. We also need our society including residents, businesses, schools, voluntary and community organisations to contribute to the delivery of the actions set out in this Plan. By empowering our community to take action locally, we can build momentum for change and drive real progress to tackle the climate emergency together.

OUR CLIMATE EMERGENCY RESPONSE

In July 2019, Wokingham Borough Council (WBC) members unanimously declared a climate emergency. The declaration commits WBC to do as much as possible to achieve carbon neutrality by 2030. Subsequently, the council published its first Climate Emergency Action Plan (CEAP).

The CEAP establishes 9 key priority areas and 102 actions to mitigate CO2 emissions and achieve our 2030 goal.

These are:

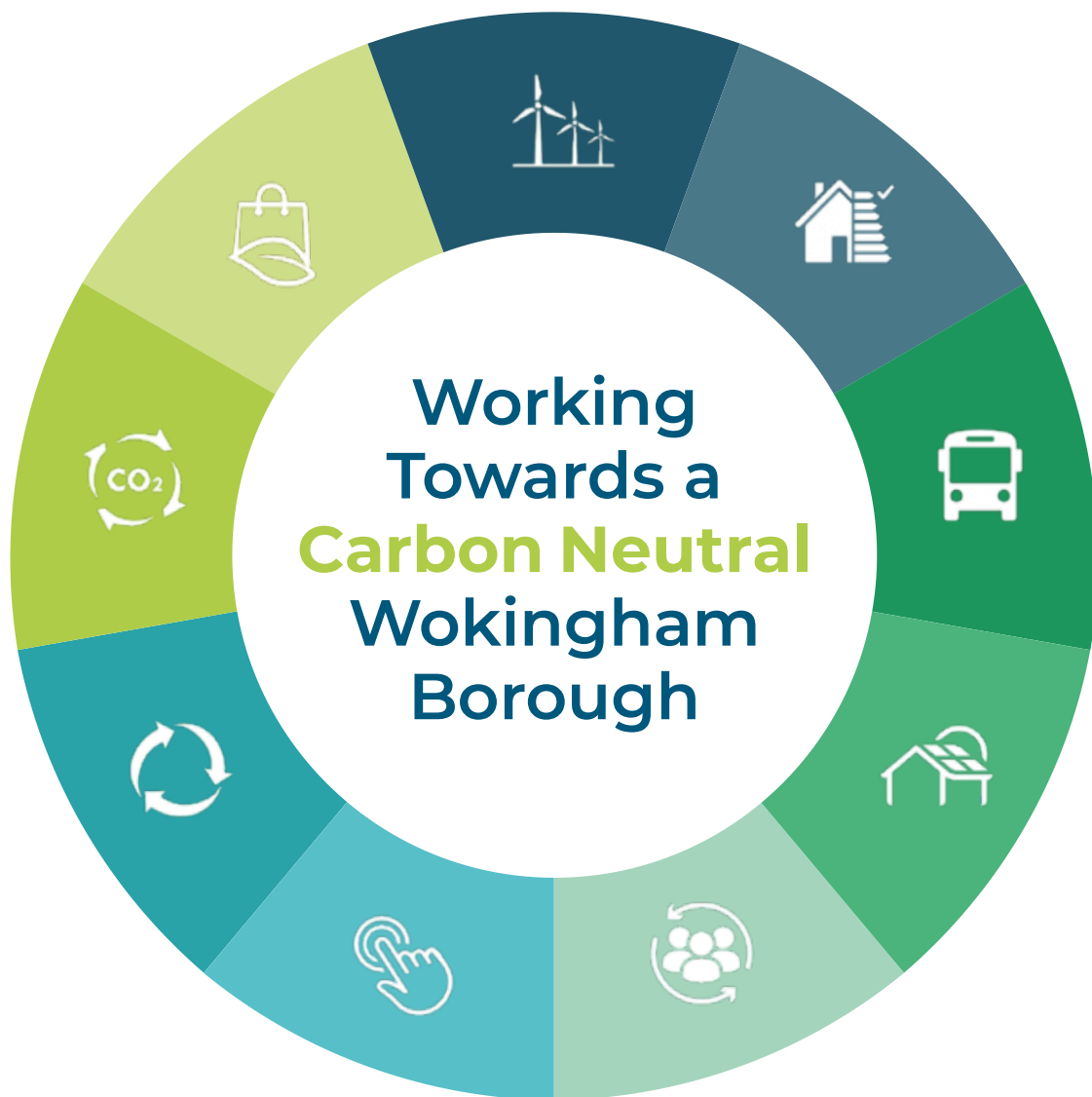
- 1. Transport,**
- 2. Renewable Energy Generation,**
- 3. Building Retrofitting,**
- 4. Carbon Sequestration,**
- 5. Waste & Recycling,**
- 6. New Developments,**
- 7. Procurement,**
- 8. Engagement & Behaviour Change,**
- 9. Council specific actions.**

This document 'CEAP in a snapshot' summaries the main actions and estimated carbon savings against these 9 key priorities.

The full progress report can be found at www.wokingham.gov.uk/climate-emergency which includes more detailed actions and the current progress being made against each priority, and the associated benefits and carbon savings the council plans to deliver by 2030, based on what is possible in current circumstances.



OUR DREAM FOR A CARBON NEUTRAL BOROUGH



In a carbon neutral Wokingham Borough, our community would breathe clean air and enjoy clean and green bio-diverse spaces. People would walk, wheel, scoot or cycle, use accessible public transport and low-emission vehicles. Homes, businesses, places of work and leisure would be low-carbon and energy efficient, powered by renewables and use innovative technologies that pave the way forward for future generations. Wokingham Borough would be an inclusive and diverse community, where everyone plays their part in contributing towards a low-carbon future.

A dream for a carbon neutral Borough, developed following the "Dream session" of the 2022 Community Deliberative Process "Let's Talk Climate"

OUR CLIMATE EMERGENCY ACTION PLAN PROGRESS



1.

TRANSPORT

- 94 on-street chargepoints installed to date.
- 2,125 children received Bikeability training.
- £264,000 LEVI grant successfully received to install on-street electric vehicle chargers across the Borough.



2.

RENEWABLE ENERGY GENERATION

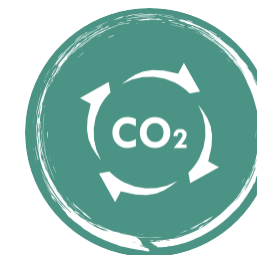
- 30,886 MWh generation of renewable electricity in the Borough saving 6,395 tCO₂e*
- 3184 solar panels installed across 301 dwellings as part of the Berkshire wide Solar Together scheme.
- Barkham solar Farm 2026 grid connection date confirmed.



3.

RETROFITTING BUILDINGS

- 16 properties at the Gorse Ride development completed which includes energy efficiency improvements.
- Over 140 residents have accessed the newly adopted council Home Decarbonisation Service
- 24 schools in the Borough have been retrofitted to improve energy efficiency



4.

CARBON SEQUESTRATION

- 10% biodiversity net gain is now mandatory in all planning applications.
- 45,906 trees or hedgerows planted over 17 hectares since 2021.
- 26 schools participated the tree planting projects with Freely Fruity charity.

*tonnes of carbon dioxide equivalent (tCO₂e)

OUR CLIMATE EMERGENCY ACTION PLAN PROGRESS



5.

WASTE & RECYCLING

- 2,415 tCO₂e* estimated **savings** per year from new alternate weekly collections changes.
- 18,500 residents **engaged** with waste & recycling newsletter
- 25,284 tonnes of waste **recycled** this year.



6.

NEW DEVELOPMENT

- Local Plan Update currently in development which includes key Climate Emergency policies around **minimum energy standards** in future developments.



7.

PROCUREMENT

- **Climate emergency questionnaire** now being provided to **new suppliers** as part of procurement processes.
- Pilot studies to **identify** opportunities for **carbon savings** have been carried out for **key contracts**



8.

ENGAGEMENT AND BEHAVIOUR CHANGE

- A new Climate Emergency Hub launched on the council website
- **over 500 people** within the community have attended **events** related to Climate Emergency
- Wokingham Borough Council is working with the University of Reading to support schools develop their **School Climate Action Plans**



9.

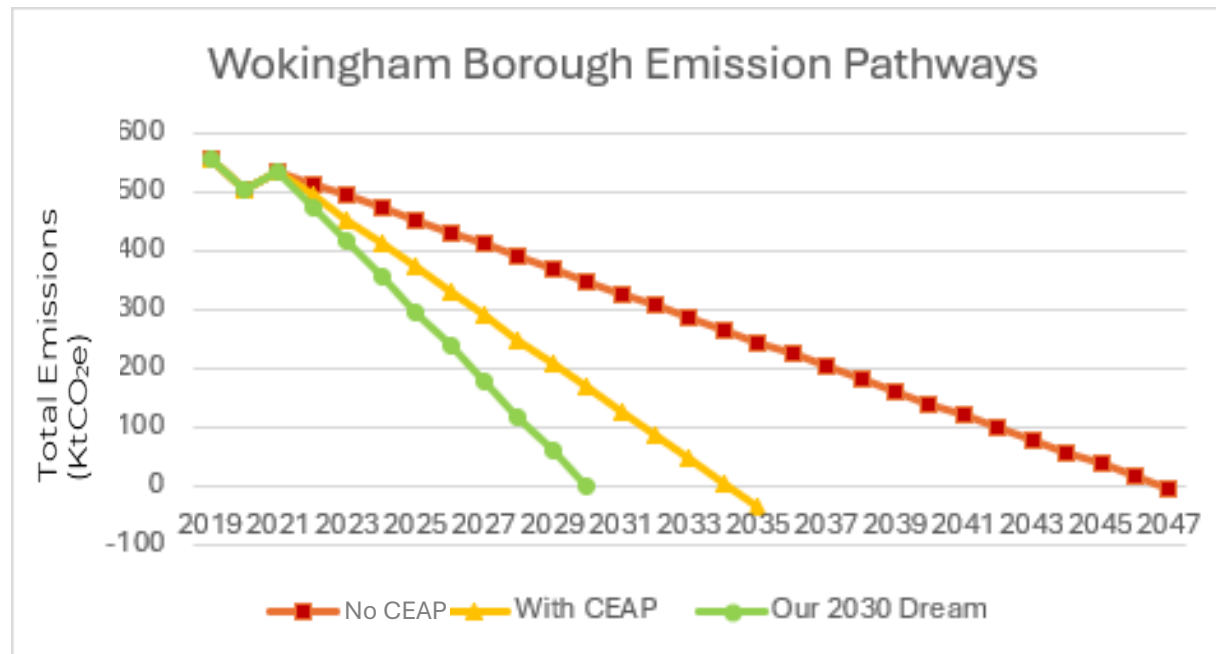
COUNCIL SPECIFIC ACTIONS

- 184 properties being **assessed** for **energy efficiency** as part of council wide energy action plan
- **Electric Vehicle salary sacrifice scheme** introduced for council staff.
- 1,476 tCO₂e* **Reduction** of council specific emissions this year

*tonnes of carbon dioxide equivalent (tCO₂e)

CURRENT AND FUTURE EMISSIONS

We are already experiencing the effects of climate change. Temperatures are rising, rainfall patterns are shifting, and more extreme climate events like heavy rainstorms and record high temperatures are already taking place. These changes are linked to the climbing levels of carbon dioxide and other greenhouse gases in our atmosphere. By taking action to reduce these emissions that warms our planet, we can reduce the risks we will face from future climate change. It's difficult to stop all carbon emitting activities. Achieving 'carbon neutral' aims to 'balance' emissions by cutting them where we can and introducing measures to prevent those emissions that we cannot avoid from entering the atmosphere.



The three lines in the graph above represent three potential scenarios for emissions based on the extent of actions taken by the council and the wider Borough community. The red line showing minimal intervention with no Climate Emergency Action plan in place, the orange line with projections based on our current Climate Emergency Action Plan to show the impacts of the actions in this plan, and a 'carbon neutral' line to show the extent of actions needed to achieve our dream for a carbon Neutral Borough by 2030.



1.TRANSPORT



Actions	Carbon Savings in tonnes (tCO ₂ e)
50% Reduction in Internal Combustion Engine (ICE) private car mileage	64,766
a) 33% From Electric Vehicles (EVs) Registration	40,713
b) 5% From Reduced Travel (Removing Journeys)	7,075
c) 2% From Public Transport Increase	2,830
d) 10% From Active Transport Increase	14,149
Reduced Road Freight	18,967
Develop Local Transport Plan 4	Included in total
Subtotal	83,733



2. RENEWABLE ENERGY GENERATION



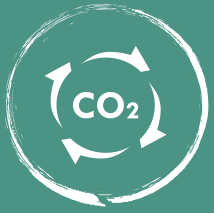
Actions	Carbon Savings in tonnes (tCO ₂ e)
Increase the generation of renewable energy through investment in solar farms to generate 49,000 MWp	10,304
Support the generation of renewable energy in the borough to generate the equivalent of approx. 1550 kWh per household.	15,748
Subtotal	26,052



3. RETROFITTING DOMESTIC & COMMERCIAL BUILDINGS



Actions	Carbon Savings in tonnes (tCO ₂ e)
Implement a Passivhaus housing scheme for 249 Council homes	914
Improve energy performance of Council Housing stock.	3,229
All local schools to be retrofitted by 2029.	310
75% of homes to be EPC C rated or above.	55,490
Subtotal	59,994



4. CARBON SEQUESTRATION



Actions	Carbon Savings in tonnes (tCO ₂ e)
Cover 170 hectares with new trees in the form of woodlands, hedgerows and orchards	2,329
Improve carbon sequestration in future land management decisions	2,031
Implement a programme of further carbon sequestration opportunities	Included in total
Implement a climate change adaptation programme for the Council and Borough.	Neutral
Subtotal	4,360



5. WASTE & RECYCLING



Actions	Carbon Savings in tonnes (tCO ₂ e)
Achieve 70% recycling target.	3,955
Achieve 3% of waste going to landfill.	2,073
Subtotal	6,028



6. NEW DEVELOPMENT



Actions	Carbon Savings in tonnes (tCO ₂ e)
Towards the end of 2025, residential and commercial development to be designed and built to carbon neutral standards	Neutral
Establish a spatial strategy and design framework which promotes active and sustainable travel, sustainable design and construction, and enable biodiversity gain	Neutral
Support low carbon and renewable energy generation	Neutral
All new residential and non-residential buildings to be designed and built to be Electric Vehicle ready by 2025	Neutral
100% of council new development is built to carbon neutral standards	Neutral
Subtotal	Neutral



7. PROCUREMENT



Actions	Carbon Savings in tonnes (tCO ₂ e)
Achieve sustainable procurement practices throughout the Council as part of corporate procurement strategy.	Neutral
The Council will incorporate social value within procurement processes.	Neutral
Subtotal	Neutral



8. ENGAGEMENT & BEHAVIOUR CHANGE



Actions	Carbon Savings in tonnes (tCO ₂ e)
Raise awareness in the community about the climate emergency agenda	Neutral
<ul style="list-style-type: none">a) Implement a Wokingham Borough Council Climate Emergency Communication and Engagement Planb) <u>Residents</u> - Share information & engage with residents on how to reduce their carbon emissionsc) <u>Businesses</u> - Support changes in work practices and behavioural change amongst local businesses and other organisationsd) <u>Schools</u> - Implement a behavioural change programme within schools that would support the adoption of new behaviours within sustainability and the creation of education setting climate action plans.e) <u>Staff</u> - support changes in work practices and behavioural change amongst council staff.	Neutral
Subtotal	Neutral



9. COUNCIL SPECIFIC ACTIONS



Priority area	Carbon Savings in tonnes (tCO ₂ e)
Reduce by 70% CO ₂ e emissions produced by Council travel by 2030	Included in travel emissions
Council car fleet to become entirely ultra-low emission by 2028	53
All buildings (laser framework procured) will be retrofitted to carbon neutral standards by 2030	6,340
Subtotal	6,393



WOKINGHAM
BOROUGH COUNCIL