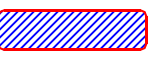


This drawing is the property of the Safe TM Services LTD, no part of this drawing may be reproduced in any form without prior permission.

The information in this drawing is compliant with Chapter 8 of the Traffic Signs Manual & customer instructions.

This layout is for installation by an NRSWA, 12A, 12B, 12D qualified engineer and may be modified to suit the conditions at the time of installation.

**Work area**



**Notes:**

Scheme

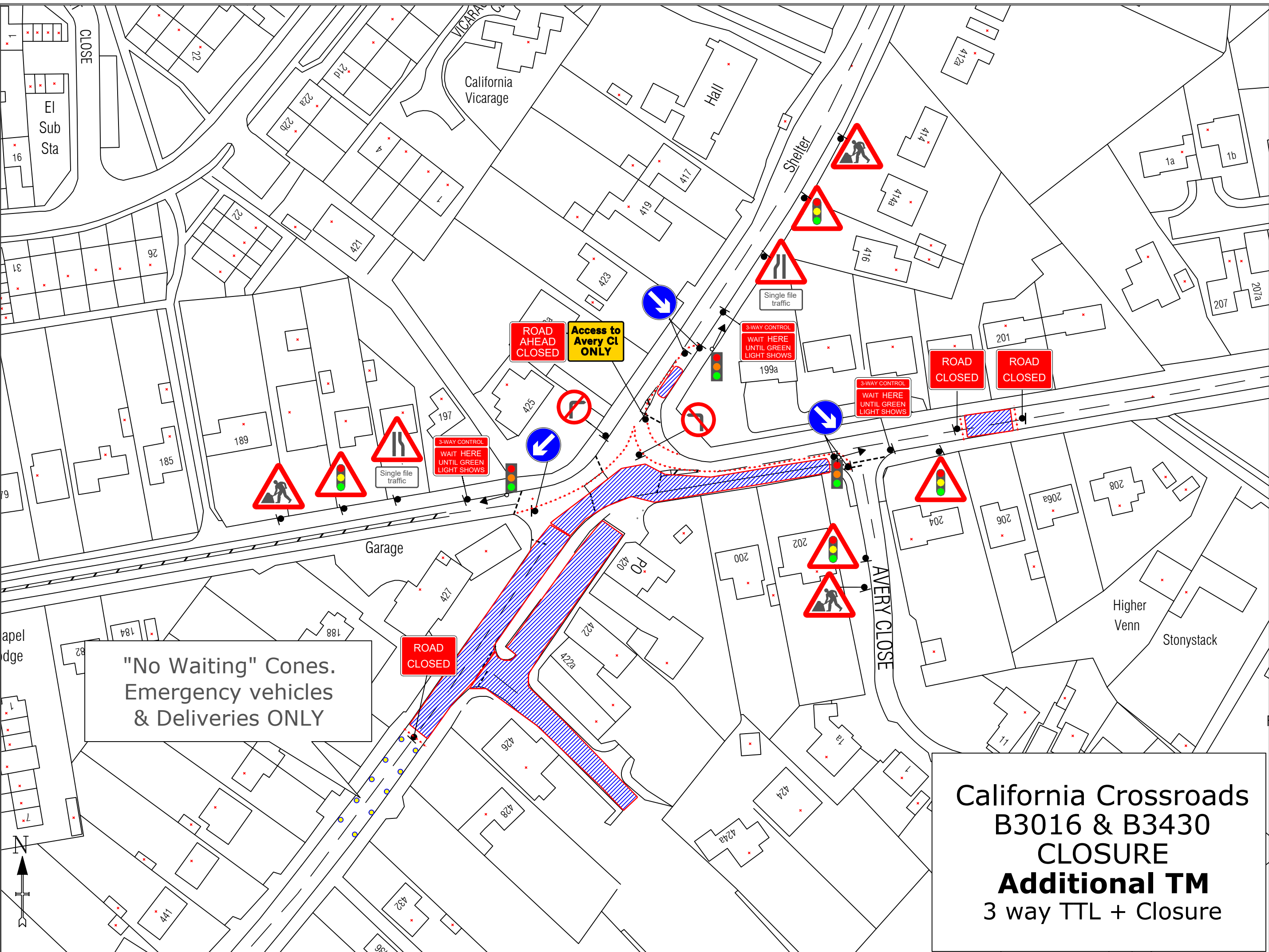
California Crossroad

Client

BQS



Unit X,  
Willments Shipyard,  
Hazel Road,  
Woolston,  
Southampton.  
SO19 7HS.



**California Crossroads  
B3016 & B3430  
CLOSURE  
Additional TM  
3 way TTL + Closure**